



# Living things and their habitat

Images and planning from [www.developingexperts.com](http://www.developingexperts.com)

## Important People

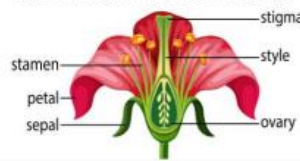
David Attenborough and Jane Goodall study living things. They present the life of animals on earth and have made important documentaries so we can learn about the world around us.



## Reproduction in plants

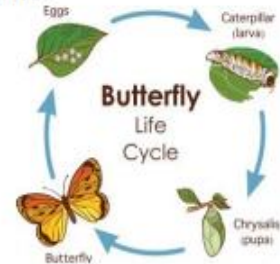
Plants contain both male and female cells. Some need to be pollinated in order to be fertilised. Others use asexual reproduction to reproduce.

### Common Flower Parts



## Metamorphosis

Amphibians are a bit different. Many are born live or underwater. They complete a metamorphosis as adults and can live and breathe on land. Metamorphosis is the change in body form and habits during the life cycle.



## Mammals

Mammals reproduce and give birth to live young. They can be either placental, monotreme or marsupial.



## Rocket Words

|  |                  |   |
|--|------------------|---|
|  | living organism  | something that can move, use energy and reproduce                           |
|  | naturalist       | an expert in the studies of natural history                                 |
|  | primatologist    | a person who carries out a scientific study of primates                     |
|  | metamorphosis    | when insects and amphibians transform from larval stage to their adult form |
|  | endangered       | an animal is considered endangered when there are very few of them alive    |
|  | asexual          | where only one parent is needed to create offspring                         |
|  | reproduction     | to make offspring either sexually or asexually                              |
|  | fertilisation    | when a sperm and egg cell join together                                     |
|  | placental mammal | has live young which develop before birth inside a female mammal            |
|  | monotreme mammal | a mammal who lays eggs to reproduce   |