

Name:.....

Year 5 Spring 1 Homework – Week 6

Set: Monday 10th February 2025

Due: Friday 14th February 2025

Spelling Focus: Homophones & Near Homophones
Use the columns to learn your spellings and practise your handwriting.

<i>Spelling word</i>	<i>Not joined</i>	<i>Not joined</i>	<i>Joined</i>
<i>principal</i>			
<i>principle</i>			
<i>profit</i>			
<i>prophet</i>			
<i>descent</i>			
<i>dissent</i>			
<i>desert</i>			
<i>dessert</i>			
<i>draft</i>			
<i>draught</i>			

Use the space below to practise your spellings words in a method of preferred choice. See the spelling menu for 35 different choices!

Name:.....

Year 5 Spring 1 Homework – Week 6

Set: Monday 10th February 2025

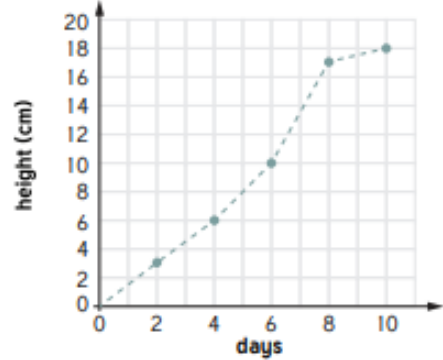
Due: Friday 14th February 2025

Week Six

1

Task 1

Complete the questions about the line graph showing the height of a plant.



What was the height of the plant on day 4?

How many days did it take for the plant to grow to 14cm?

Task 3

Divide each number by 10, 100 and 1000.

Number	÷ 10	÷ 100	÷ 1000
202			
4			
5678			
35,400			

Task 5

Complete the cubed numbers.

a) $1^3 = \square$

b) $2^3 = \square$

c) $3^3 = \square$

d) $4^3 = \square$

e) $5^3 = \square$

2

Task 2

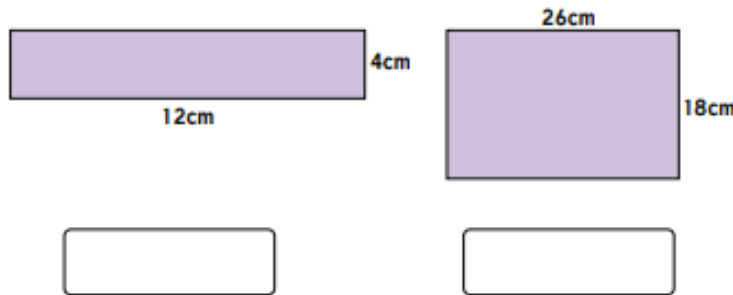
List the first ten prime numbers.





Task 4

Find the area of the rectangles (not to scale).



Task 6

Find the missing number.

	Th	H	T	O
	6	4	1	2
+				
	9	9	7	5

6